

Thermo Scientific Phire Plant Direct PCR Kit: Plant Genotyping And Transgene Detection Without DNA Purification

Pia Kuusisto and Pak Yang Chum, Thermo Fisher Scientific, Vantaa, Finland

Key words

- Direct PCR
- Genotyping
- Transgene detection
- Arabidopsis
- Gerbera
- dCAPS

Abstract

Thermo Scientific Phire Plant Direct PCR Kit enables DNA amplification directly from various plant tissues. Here we present simple and robust protocols for plant genotyping and transgene detection without the need to purify the DNA before PCR. This saves both time and cost. In this application note the Thermo Scientific Piko Thermal Cycler and UTW PCR vessels were used to obtain optimal results in the minimal amount of time.

Introduction

PCR-based target DNA detection has many applications in plant research, e.g. plant genotype analysis and verification of RNAi transgenes. PCR from plant tissues traditionally involves an initial DNA isolation step which may require expensive or toxic reagents, and is time consuming with an increased risk of cross contamination.^{1,2} However, by using the Phire® Plant Direct PCR Kit the DNA target can be detected easily, without prior DNA extraction.

Here we demonstrate that the presence of a transgene (or an RNAi vector) in gerbera plant individuals can be detected easily both from plant leaves and petal tissue without prior DNA extraction. In another model we present an example of a derived cleaved amplified polymorphic sequence analysis (dCAPS)³ performed directly from *Arabidopsis* plant leaves.

Materials and Methods

- Phire Plant Direct PCR Kit
- Ssp I (New England Biolabs)
- 24-well Piko Thermal Cycler
- Piko® PCR Plates
- Gerbera and *Arabidopsis* tissues

Gerbera Leaves And Petal Tissues:

Direct protocol: A 0.50 mm punch was cut from a plant leaf using the Harris Uni-Core™ (included in the kit). The samples were placed directly into 20 µl PCR reactions. Reactions were run using a 24-well Piko Thermal Cycler and Piko PCR Plates. The resulting PCR products were analyzed on agarose gels.

Arabidopsis Leaves:

Direct protocol: A 0.50 mm punch was cut from a plant leaf using the Harris Uni-Core. The samples were placed directly into 50 µl PCR reactions. Reactions were run using a 24-well Piko Thermal Cycler and Piko PCR Plates.

Restriction digestion: After PCR, the reactions were spun down. The restriction digestion reactions were performed with *Ssp* I directly in the

supernatants. The resulting fragments were analyzed on agarose gel.

Note: When amplifying DNA directly from plant tissues, the PCR products include plant and PCR derived components that may interfere with the restriction digestion enzyme. Therefore, it may be necessary to either dilute (e.g. 1:2 or 1:3 in water) or purify the PCR product before the subsequent digestion.

Results and Discussion

In this application note we describe the performance of the Phire Plant Direct PCR Kit in two target DNA detection approaches. First we demonstrated that an RNAi vector can be easily detected from gerbera plants without any PCR template purification (Figure 1). Twelve gerbera individuals were tested by simply placing a 0.50 mm punch of leave or petal tissue into a PCR reaction. Five individuals gave a positive signal with RNAi transgene specific primers indicating the presence of the RNAi vector. The results were confirmed with a conventional DNA

Table 1: Reaction conditions for PCR

Components	20 µl reaction	50 µl reaction	Final Conc.
H ₂ O	add to 20 µl	add to 50 µl	
2x Phire Plant PCR Buffer	10 µl	25 µl	1x
primer A	x µl	x µl	0.5 µM
primer B	x µl	x µl	0.5 µM
Phire Hot Start II DNA Polymerase	0.4 µl	1 µl	
Plant tissue	0.5 mm punch	0.5 mm punch	

Table 2: Cycling conditions

Cycle step	3-step protocol		Final Conc.
	Temp.	Time	Cycles
Initial denaturation	98°C	5 min	1
Denaturation	98°C	5 s	40
Annealing	X°C	-	
Extension	72°C	20 s	
Final extension	72°C 4°C	1 min hold	1

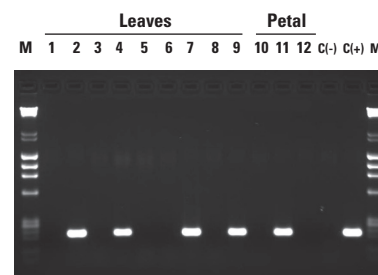


Figure 1. Detection of RNAi vector in gerbera plants using the Thermo Scientific Direct PCR approach. Punches (0.50 mm) from plant leaves or petal tissues were placed directly in 20 µl PCR reactions. 210 bp products were amplified using transgene specific primers. The results indicate that plant individuals corresponding to samples 2, 4, 7, 9 and 11 contain the RNAi transgene. The obtained results were confirmed by conventional analysis of CTAB DNA extraction followed by PCR.

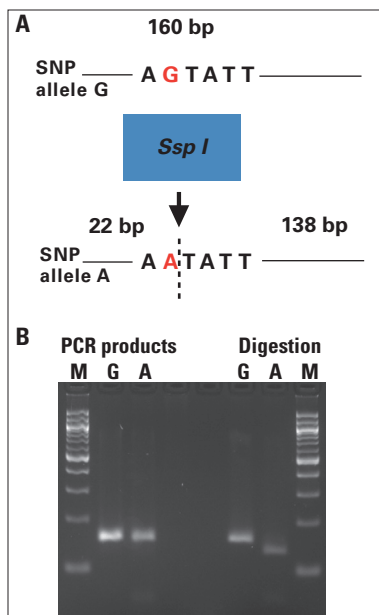


Figure 2. Genotyping of *Arabidopsis* plant individuals with dCAPS technique directly from leaf punches. 0.50 mm punches from plant leaves were placed directly in 50 μ l PCR reactions. 160 bp PCR products containing the SNP site (G or A allele) were amplified with primers introducing a unique *Ssp*I site to the A-allele. The unpurified PCR products were digested with *Ssp*I restriction enzyme. The resulting fragments were analyzed on 3% agarose gel. M, size marker; A and G correspond to the SNP alleles of each sample. The obtained results were confirmed by conventional analysis of DNA extraction followed by PCR and restriction digestion.

extraction method using hexadecyltrimethylammonium bromide (CTAB) (data not shown). The sample material was also tested with the control primer set supplied with the kit to ensure the reagents and samples were in good condition (data not shown).

Next we tested the suitability of the Phire Plant Direct PCR Kit to dCAPS genotyping. In dCAPS genotyping assays single nucleotide polymorphisms (SNPs) are identified by SNP allele specific restriction endonuclease digestion. The restriction site within the SNP of interest is either introduced or destroyed by PCR using a primer with one or more mismatches to the target DNA. After PCR, the PCR products are digested and the resulting fragments revealing the

genotype of each individual are analyzed on agarose gel.

In this example the SNP site of interest in the *Arabidopsis* genome was amplified from plant leaf punches with the Phire Plant Direct PCR Kit. The forward primer contained one mismatch at the 3'-end creating an *Ssp*I specific restriction site in the target DNA which included the SNP of interest (A-allele) but not in the other allele of that particular SNP (Figure 2). Note that even though the 3'-5'-exonuclease activity of the Phire Hot Start II DNA Polymerase is moderate, it was necessary to use one 3'-terminal phosphorothioate (PTO) modification in the 3'-end of forward primer.

The PCR product was digested with *Ssp*I directly in the PCR reaction mix. Agarose gel analysis revealed high yields of digested product. This result confirmed that no DNA purification is required prior to dCAPS genotyping when using the Phire Plant Direct PCR Kit.

Acknowledgements

The gerbera samples and the related PCR primers were kindly provided by Professor Paula Elomaa and her group, Gerbera laboratory, Dept. of Agricultural Sciences, University of Helsinki. For the *Arabidopsis* samples and the concerned PCR primers we thank Professor Jaakko Kangasjärvi and his group, The Plant Stress Group, Plant Biology, Department of Biosciences, University of Helsinki. The experiments with the traditional methods were conducted by Dr. Anneke Rijpkema and Mrs. Airi Lamminmäki.

References

1. Doyle, J.J. and Doyle, J.L. 1987. A rapid DNA isolation procedure for small quantities of fresh leaf tissue. *Phytochemical Bulletin* 19 (1): 11-15.
2. Kim, C.S. et al. 1997. A simple and rapid method for isolation of high quality genomic DNA

from fruit trees and conifers using PVP. *Nucleic Acids Research* 25 (5): 1085-1086.

3. Neff, M.M. et al. 1998. dCAPS, a simple technique for the genetic analysis of single nucleotide polymorphisms: experimental applications in *Arabidopsis thaliana* genetics. *The Plant Journal* 14(3):387-392.

Troubleshooting

For technical information or troubleshooting contact Thermo Scientific Genomics Tech Support:

In North America (US, Canada, Central/South America)
 Techservice.genomics@thermofisher.com
 +1 (800) 235-9880

In Europe (EU, Middle East, Africa)
 Techservice.emea.genomics@thermofisher.com
 (+)44 1372 840410

In Other Countries
 www.thermoscientific.com/
 finnzymescontact

Copyright © 2011 Thermo Fisher Scientific, Inc. All Rights Reserved.

Harris Uni-Core and Harris Cutting Mat are trademarks of Shunderson Communications Inc. All other trademarks are the property of Thermo Fisher Scientific Inc. and its subsidiaries.

Euro Literature Code: PB_2011_18

US Literature Code: 0002810L01U